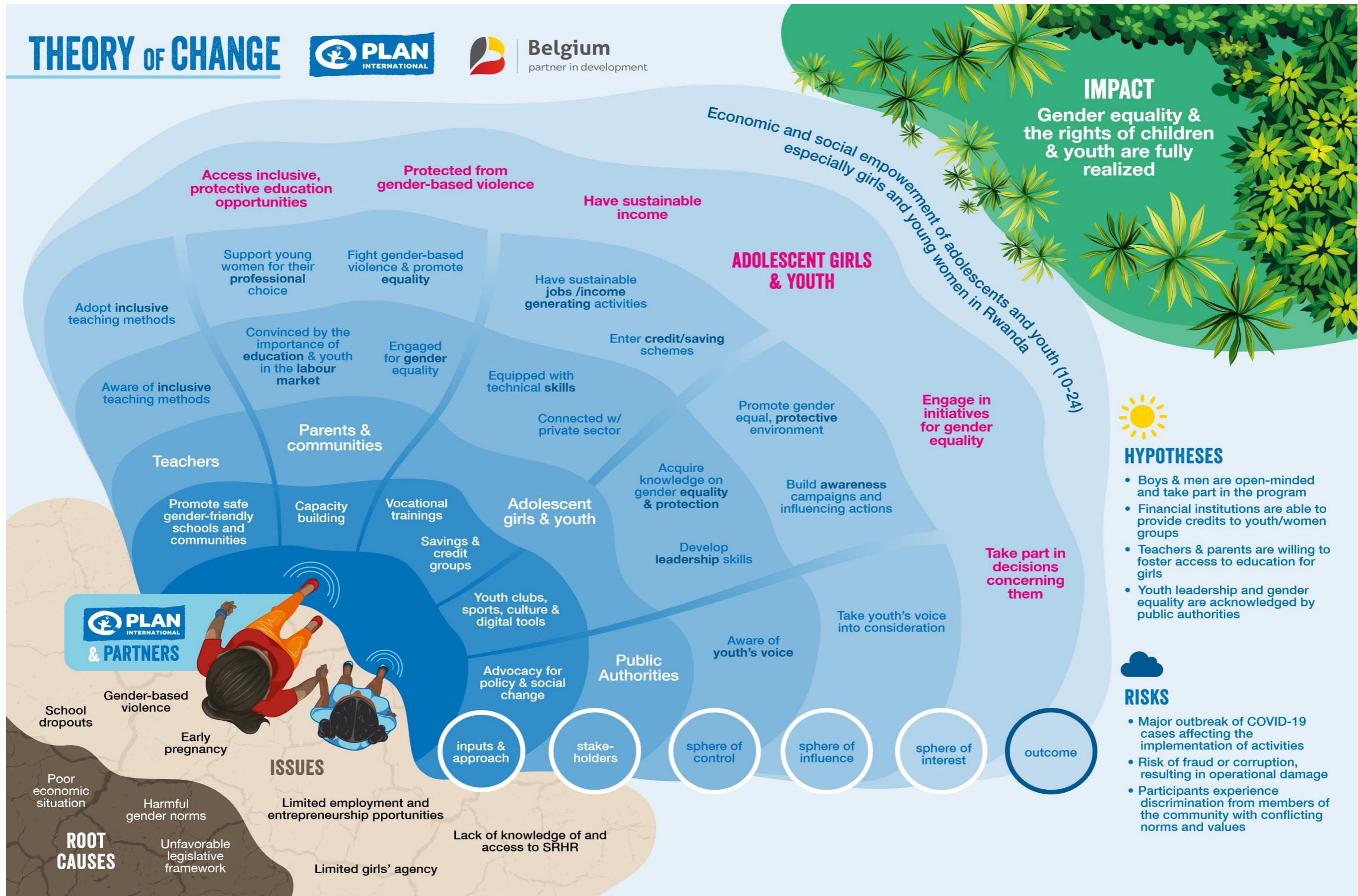


THEORY OF CHANGE



Belgium
partner in development



HYPOTHESES

- Boys & men are open-minded and take part in the program
- Financial institutions are able to provide credits to youth/women groups
- Teachers & parents are willing to foster access to education for girls
- Youth leadership and gender equality are acknowledged by public authorities



RISKS

- Major outbreak of COVID-19 cases affecting the implementation of activities
- Risk of fraud or corruption, resulting in operational damage
- Participants experience discrimination from members of the community with conflicting norms and values